

ROOM 1. LEVEL 5

TECHNICAL SPECIFICATIONS

It has a capacity for 340 people in seats with arms and 176 at school. It is divided into 2 spaces via soundproof panels.

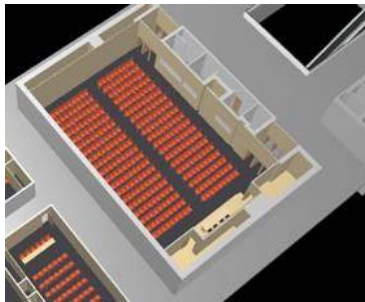
The interconnection of Room 1 with the rest of the rooms at the Congress Centre enables different image, sound and simultaneous translation formats to be retransmitted to the different venue spaces.



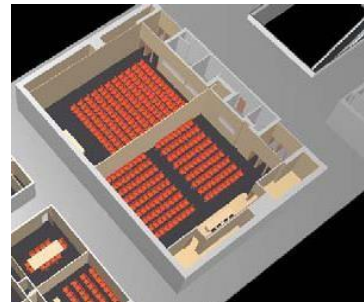
ROOM CAPACITIES

NAME OF ROOM	SURFACE AREA (m ²)	HEIGHT (m)	DIMENSION LxW (m)	STAGE	CAPACITY (People)				
					Theatre	School	"U" TYPE	Cabaret	Board
Room 1	353	3.75		20 m2	340	176	50	108	50
Room 1A	175	3.75		20 m2	160	80	28	54	30
Room 1B	177	3.75		----	140	72	32	54	30

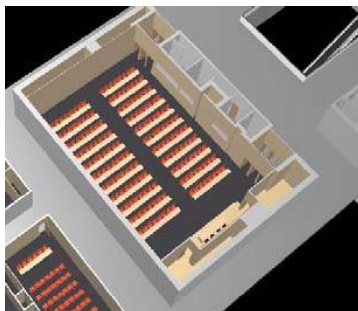
LAYOUT MODELS



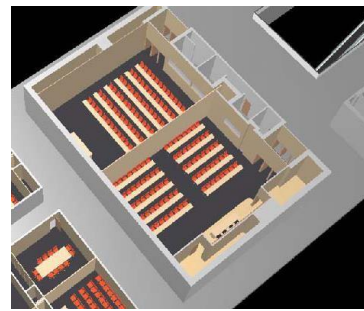
Theatre



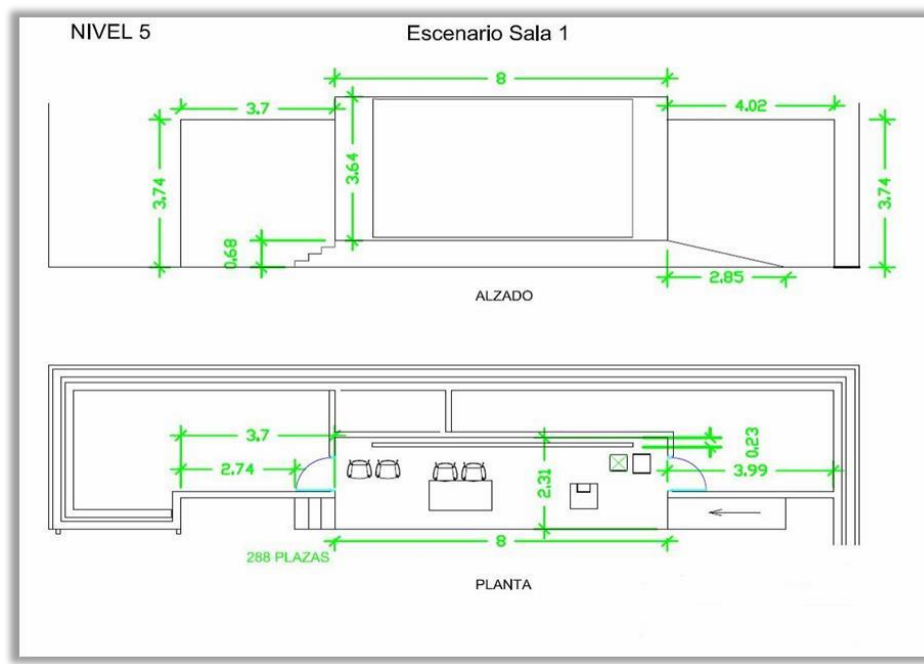
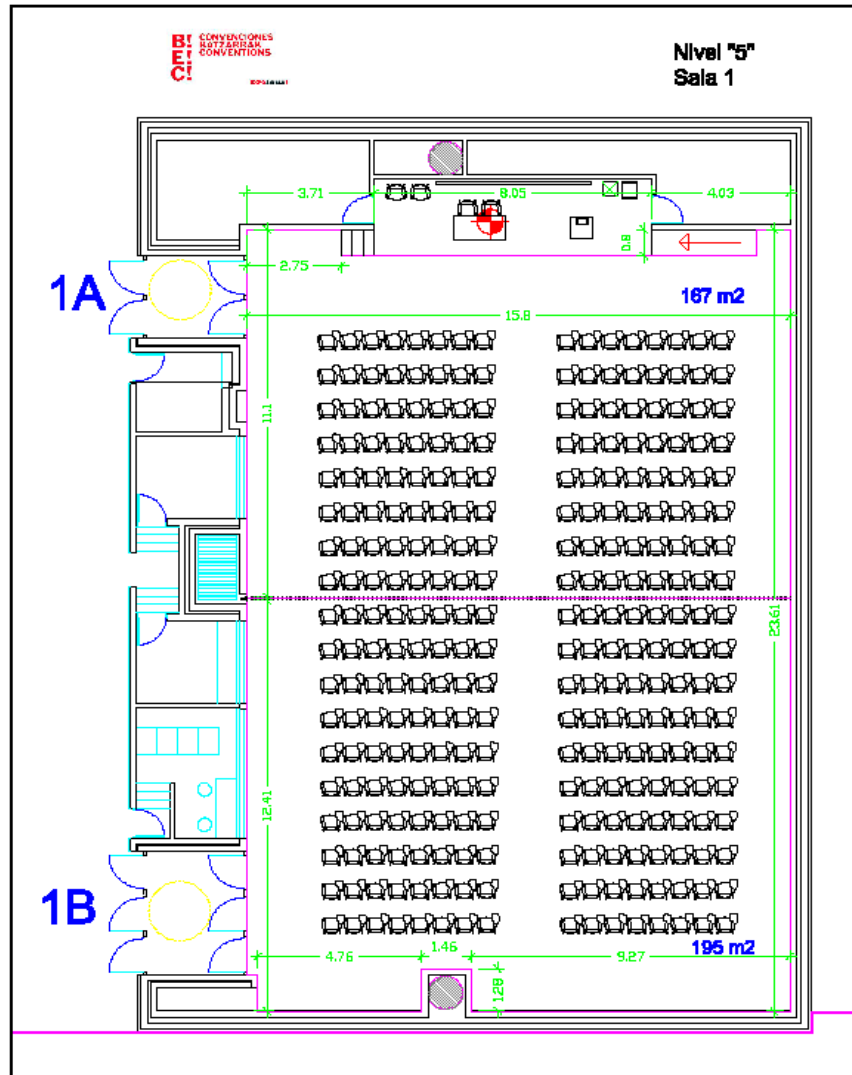
Theatre (divided into 2)



School



School (divided into 2)



AUDIOVISUAL SPECIFICATIONS

FURNITURE:

- Presiding table for up to 6 speakers.
- Lectern

SOUND:

- Microphone (fixed, wireless: hand-held, headset, BOSCH digital delegate unit).
- Approved (XLR) audio inputs for communication media.
- Intercom system.
- Players/recorders in diverse formats.

IMAGE

- 150" on stage screen. (3 x 2.30m)
- Barco IQ 500 Projector
- On stage reference monitors
- Fibre optic connections between the stage and control booth.
- Players/recorders in diverse formats.
- Video mixers.
- 2 motorised cameras for monitoring, recording and retransmission of the different events.
- Mobile unit connections.

SIMULTANEOUS TRANSLATION

- 2 independent simultaneous translation booths.
- Digital equipment for 3 languages
- BOSCH wireless digital stereo receivers.

LIGHTING

- Motorised rack with regulated lighting on stage
- General room lighting divided into different circuits.

VIDEO CONFERENCE:

- High performance video conference equipment capable of transmitting/receiving high quality audio and video via RDSI lines in a local layout.

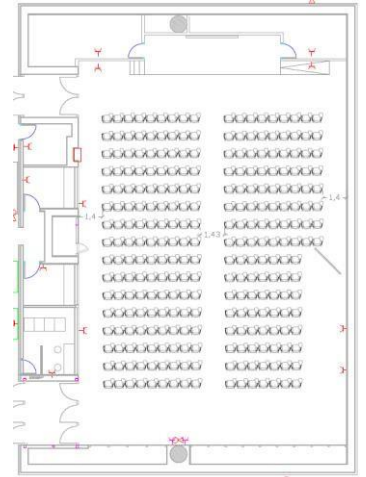
NETWORKS + WI-FI

- High capacity Wi-Fi with 4 points distributed around the room with a capacity of up to 242 users per point.
- Fixed connections distributed throughout the floor of the Room enabling over 300 work stations to be simultaneously connected.
- 1000 Mbps broadband that enables up to 800 Mbps to be destined exclusively to an event.
Allocation of exclusive lines for HD streaming.
Capacity to create internal network VLANS (Wi-Fi, cable) between all spaces.

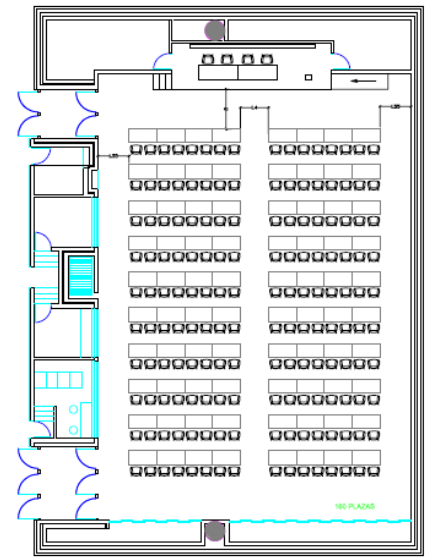
DIFFERENT ROOM 1 LAYOUTS



THEATRE Layout



SCHOOL Layout



U Layout

